

ZFTA-300M

Face, Fingerprint, and RFID Time Attendance and Access Control Terminal

ZFTA-300M is a time attendance and access control terminal loaded with advanced functions such as live-detecting fingerprint sensor, latest facial algorithm, backup battery, etc.



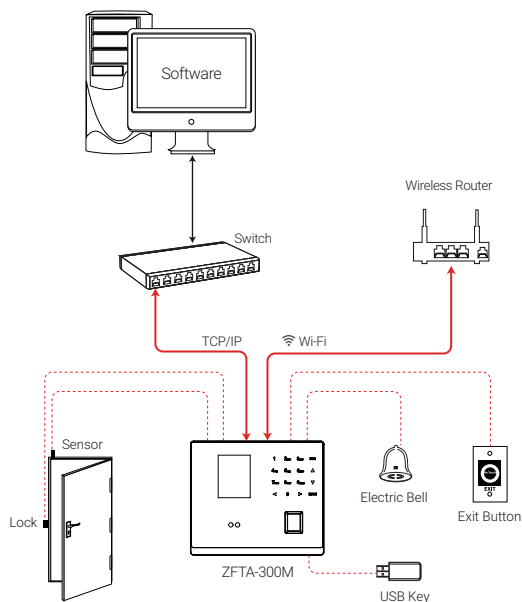
FEATURES

- Multi-biometric fast verification
- Fingerprint sensor that remains stable under strong light source and high preciseness of verification of wet and rough fingers.
- Touch keypad
- Infrared auto-turning on function to save power
- Multi-language
- Built-in 2000mAh backup battery
- Prevents face duplication and able to detect fake face

SPECIFICATIONS

Model: ZFTA-300M	
Face Capacity	3,000
Fingerprint Capacity	5,000
ID Card Capacity	20,000 (Optional)
Record Capacity	100,000
Algorithm	ZKFinger 10.0 / ZKFace 7.0
Display	2.8-inch TFT Screen
Communication	TCP/IP, USB-Host, Wi-Fi (Optional)
Standard Functions	Work Code, SMS, DST, Scheduled-bell, Self-Service Query, Automatic Status Switch, Photo ID, T9 input, Camera, 9-digit user ID, Built-in Battery, Multiple Verification Mode, External Bell, ADMS
Access Control Interface for	Lock, Door Sensor, Exit Button, Alarm
Optional Functions	ID/MF Card, External Printer
Power Supply	DC 12V, 1.5A
Operating Temperature	0° ~ 45°C
Operating Humidity	20% - 80%
Dimension	180*154*34.2 (mm)

CONFIGURATION



DIMENSION

