

ZTA-201M

Fingerprint and RFID Time Attendance and Access Control Terminal

ZTA-201M is a fingerprint time attendance and access control terminal which offers outstanding performance with advanced algorithm for reliable, precise, and excellent matching speed.



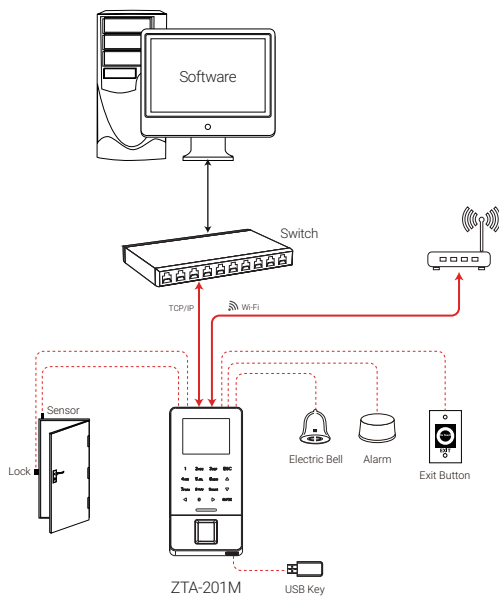
FEATURES

- Ultra-thin and elegant design
- Full access control features
- Standard Wi-Fi
- Fingerprint sensor that remains stable under strong light source and high preciseness of verification of wet and rough fingers
- Built-in auxiliary input with enhanced flexibility to link with wired detector or emergency switch

SPECIFICATIONS

Model: ZTA-201M	
Fingerprint Capacity	3,000
ID Card Capacity	5,000 (Optional)
Transaction Capacity	30,000
Algorithm	ZKFinger VX10.0
Communication	RS232/485, TCP/IP, USB-Host, Wi-Fi
Display	2.4-inch TFT LCD Color Screen
Access Control Interface for	3rd Party Electric Lock, Door Sensor, Exit Button, Alarm
Standard Functions	DST, Automatic Status Switch, Record Query, T9 input, 14-digit user ID, Anti-passback, Scheduled-bell, ADMS
Wiegand Signal	Input & Output
Auxiliary Input	1ea for linkage function
Optional Functions	ID/MF Card, Printer
Power Supply	DC 12V, 3A
Operating Temperature	0° ~ 45°C
Operating Humidity	20% - 80%
Dimension	159.8*80.7*19.4 (mm)

CONFIGURATION



DIMENSION

